



SESSION A2 PARTNERSHIP

How is the PMI
partnership helping?



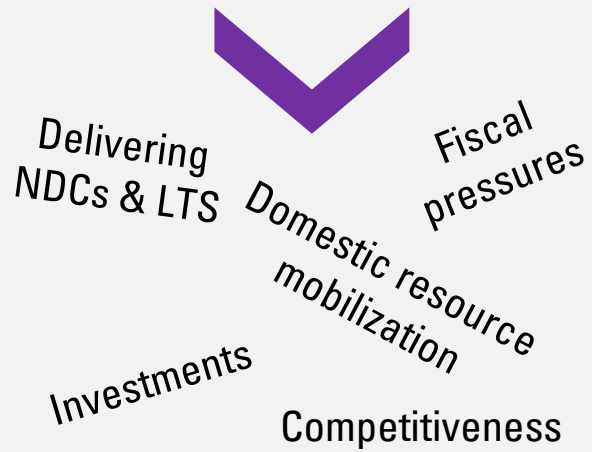
Pierre Guigon

Program Manager, Partnership for Market
Implementation, World Bank Group

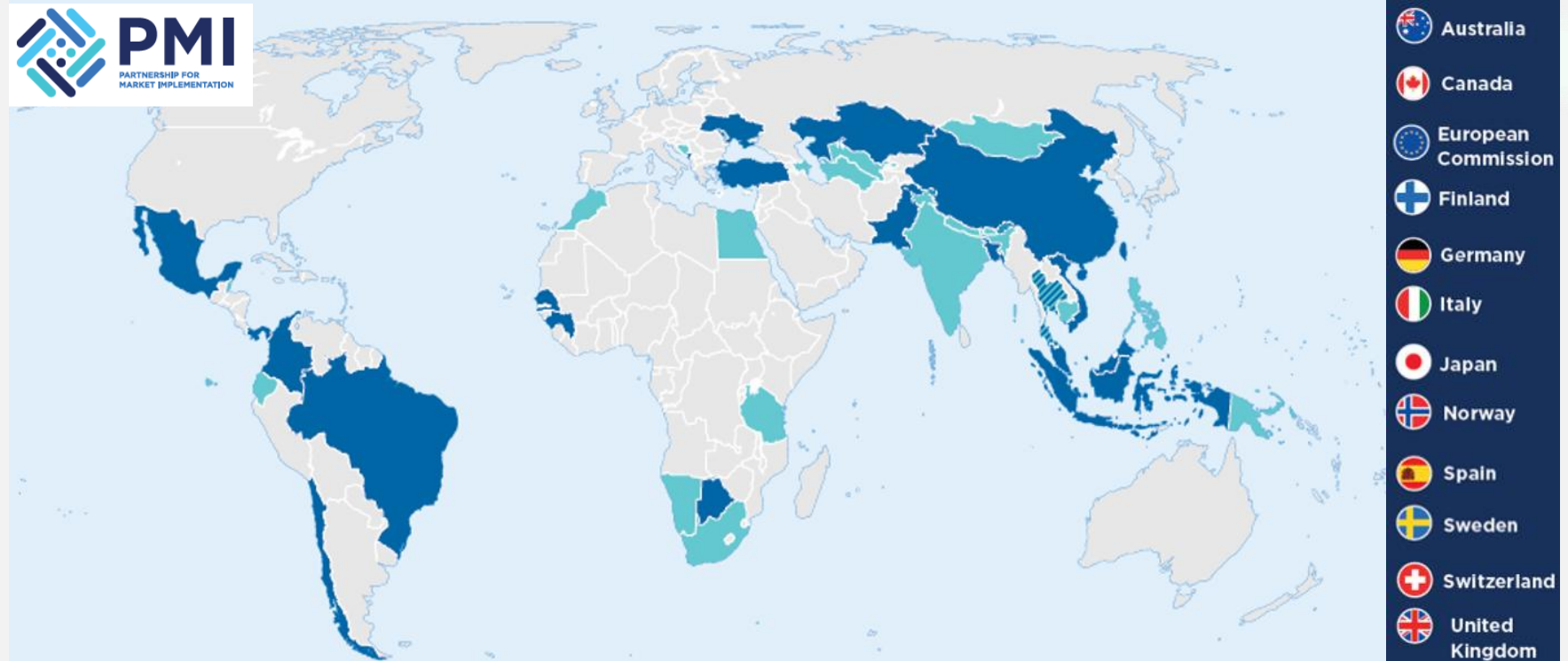
A growing implementation community

Carbon pricing and markets are becoming a mainstream implementation agenda

Should we do it?



How to do it?



38 countries supported by PMI

12 donors

A strong ecosystem of technical partners

Operational support for countries

Supporting different stages of implementation

Countries progress through different types of support



Just-in-Time

- quick diagnostics
- immediate policy questions
- targeted technical support



Readiness

- policy design
- legal frameworks
- institutional preparation



Implementation

- institutional rollout
- infrastructure deployment (MRV, registries)
- sector integration

FY26

- ✓ **Malaysia, Moldova, and Thailand moved from JIT to implementation support**
- + **South Africa, India, and Guinea expected next**

Some implementation challenges are better solved collectively



Regional Programs

- peer learning on common policy challenges
 - regional approaches and interoperability
 - coordinated support with partners
- ✓ **Launched in Europe and Central Asia, East Asia and Pacific, and Africa**
 - + **Middle East and North Africa launching next**

Practical knowledge and tools

PMI helps countries navigate complex implementation decisions



Analytics and decision tools

Helping countries assess options and trade-offs



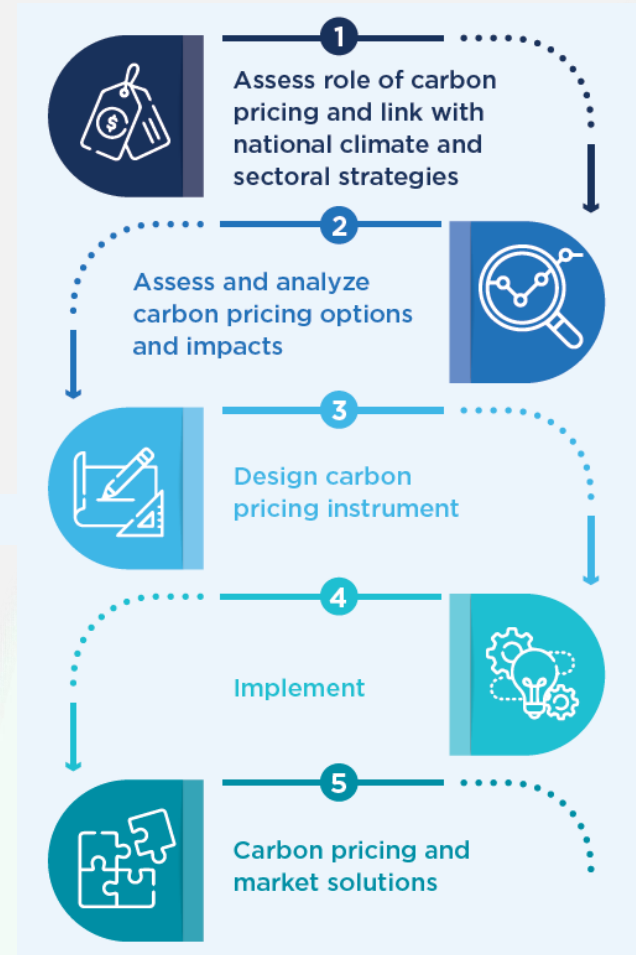
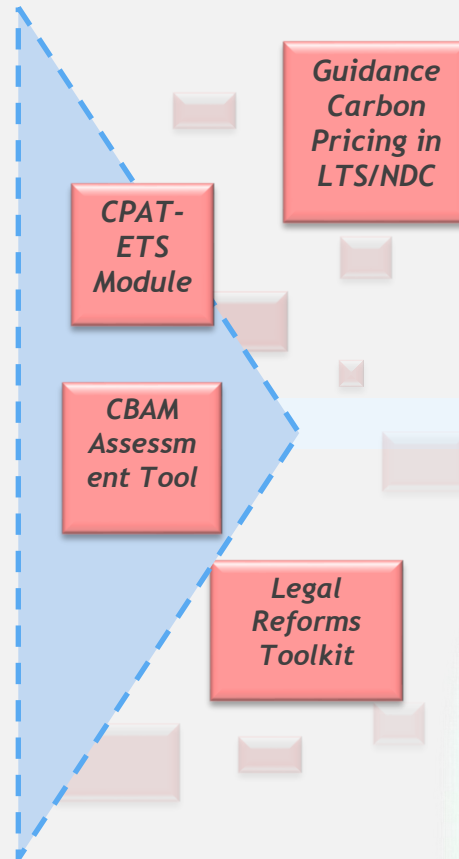
Technical guidance

Helping countries design robust systems



Innovation solutions

Helping countries operationalize infrastructure



KNOWLEDGE CENTER Scan to access



Use this Forum to shape the support you need

As you engage in the next two days...

Clarify your next steps and the support needed from PMI and partners to move forward

- What decisions will your country need to make next?
- Where are the biggest implementation bottlenecks?
- Which lessons from peers could help accelerate progress?
- Where could PMI and partners provide the most value?