

Session A2

PMI Update

How is the partnership helping?

Pierre Guigon

Program Manager, PMIF, World Bank



WORLD BANK GROUP

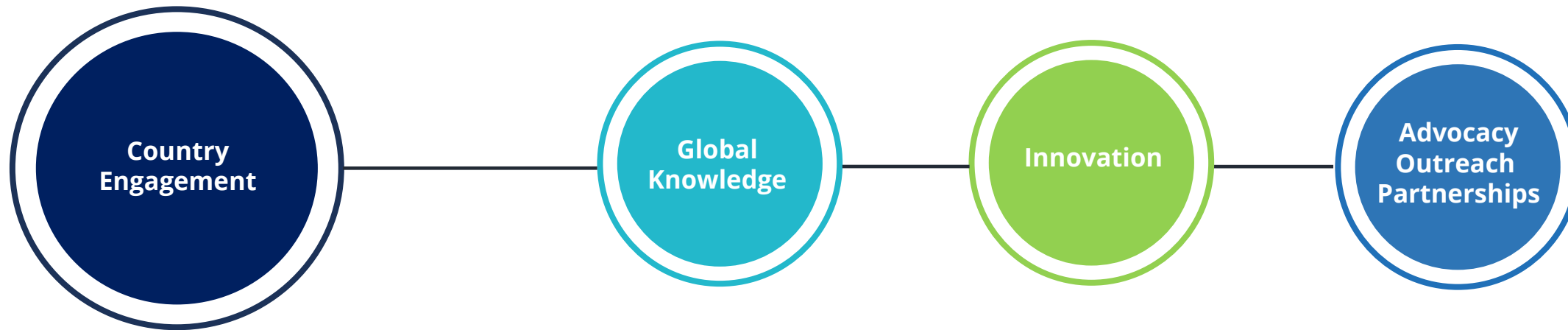


PMI
PARTNERSHIP FOR
MARKET IMPLEMENTATION

By helping countries turn knowledge into action...

**A Platform for
Country Delivery**

A Global Hub for Knowledge & Innovation



**... To unlock finance through carbon
pricing & markets**

PMI is a platform for country delivery...

Country
Engagement

PMI's GLOBAL COVERAGE

35 countries supported in total

● 8 new engagements | ○ 7 JIT completed

PMI COUNTRY PROGRAMS

Bangladesh	Guinea	Pakistan
Botswana	Indonesia	Panama
● Brazil	Kazakhstan	Senegal
Chile	Malaysia	Türkiye
China	Mexico	Ukraine
Colombia	Montenegro	Viet Nam

PMI JUST IN TIME SUPPORT

● Azerbaijan	Ecuador	○ Papua
Belize	● Egypt	New Guinea
○ Bhutan	India	○ Philippines
○ Bosnia & Herzegovina	● Moldova	● South Africa
○ Brazil	● Mongolia	Tanzania
● Cambodia	○ Namibia	● Thailand
	○ Nepal	

... To support countries across their
carbon pricing journey

A global hub for knowledge & innovation



Global
Knowledge

Informing carbon
pricing policy
and operational
design

*Key
analytics*



Innovation

*Technical
guidance*



*Learning
academies*



Advocacy
Outreach
Partnerships

KNOWLEDGE
CENTER

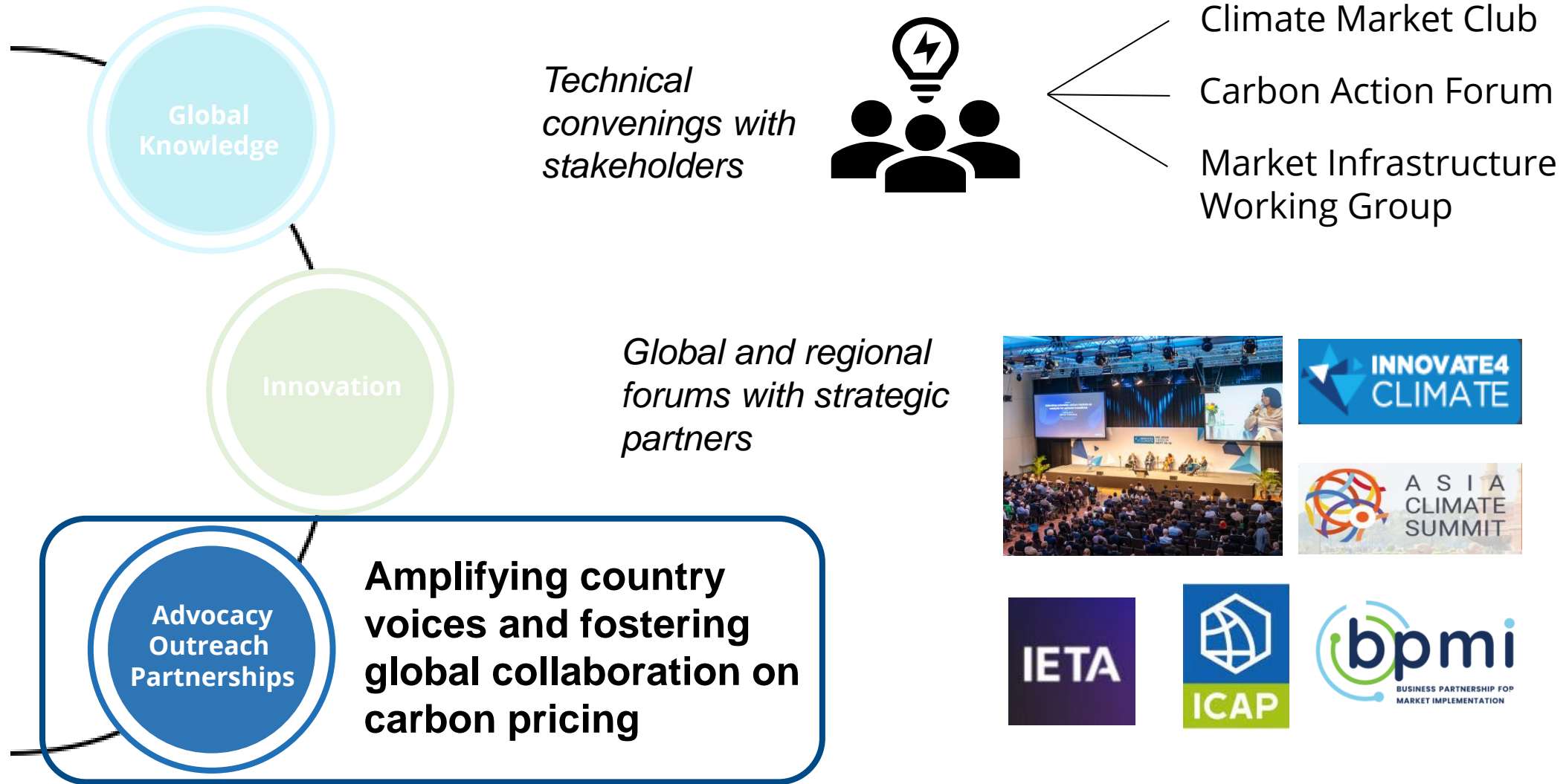
Scan to access



A global hub for knowledge & innovation

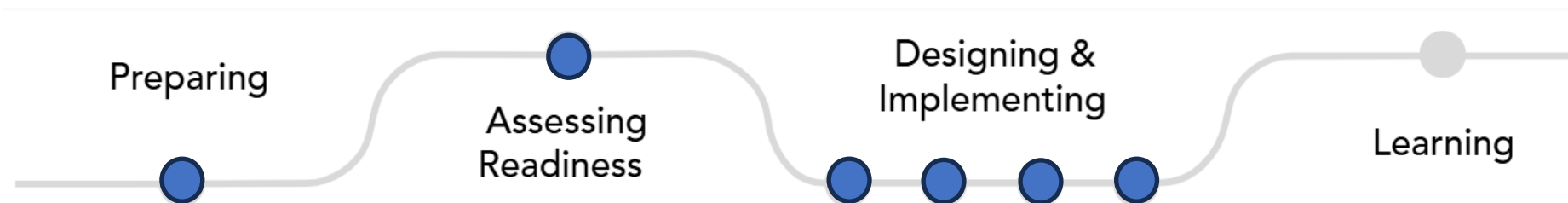


A global hub for knowledge & innovation



What's next?

As country implementation advances, knowledge work needs to stay responsive to evolving country demand and emerging challenges



PMI's strategic priorities are increasingly focused on:

- **Unlocking country implementation bottlenecks** (legal, institutional, MRV, infrastructure, market access)
- **Helping countries manage the growing complexity** of overlapping instruments, Article 6, voluntary markets
- **Embedding knowledge into policy reforms and market operationalization**

And how can the PARTNERS help ?

This Forum is not just to present PMI knowledge...

It's to:

- ✓ **Test** where PMI knowledge products are delivering, and where gaps remain
- ✓ **Align** knowledge work with evolving country implementation challenges
- ✓ **Hear** directly from countries on emerging needs
- ✓ **Inform** PMI work program to better serve operational needs
- ✓ **Coordinate** knowledge support to ensure countries receive effective technical assistance



Thank you!

Pierre Guigon
Program Manager, World Bank